

NOTES

SUPERSTRUCTURE
Light weight steel thru truss with 3' plank floor. Truss in fair condition.

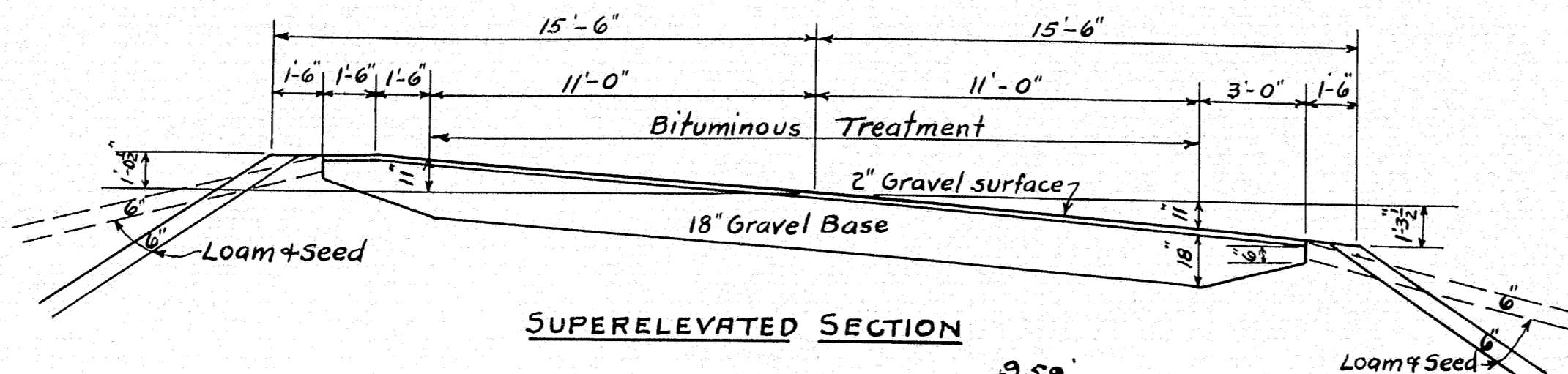
SUBSTRUCTURE
Abutments of coursed granite laid in mortar. Both abuts. on ledge and in good condition.

STREAM
Very swift current thru ledge channel. Salmon Falls about 300ft. below bridge. High water in 1936 very near elevation of underclearance.

FOUNDATION
Ledge, both abutments.

NOTE

Payment for any necessary unwatering of foundation pits shall be included in the payment for Substructure concrete.



CURVE DATA
I = 25°-06'
D = 13°-0'
T = 98.32
L = 192.38

CURVE DATA
I = 32°-33'
D = 6°-00'
T = 278.92
L = 542.50

PLAN
SCALE 1" = 30 FT.

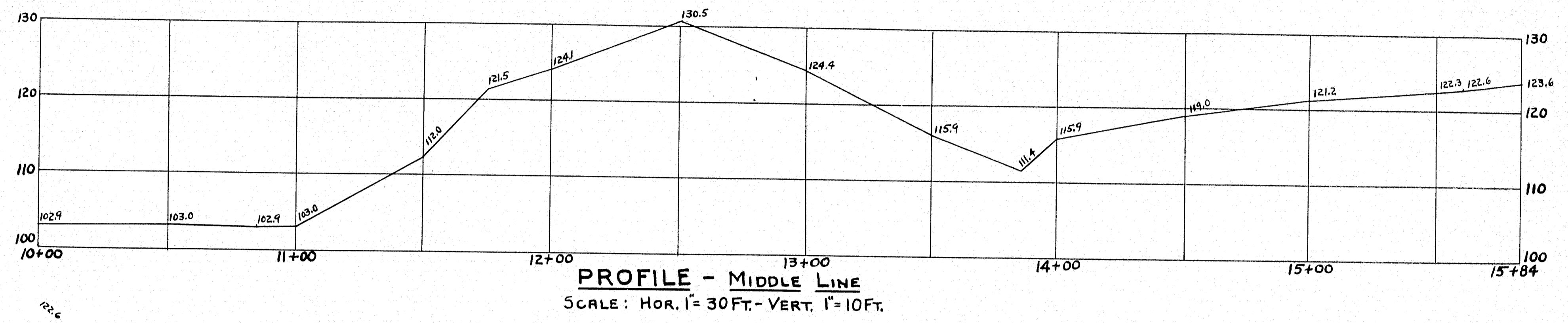
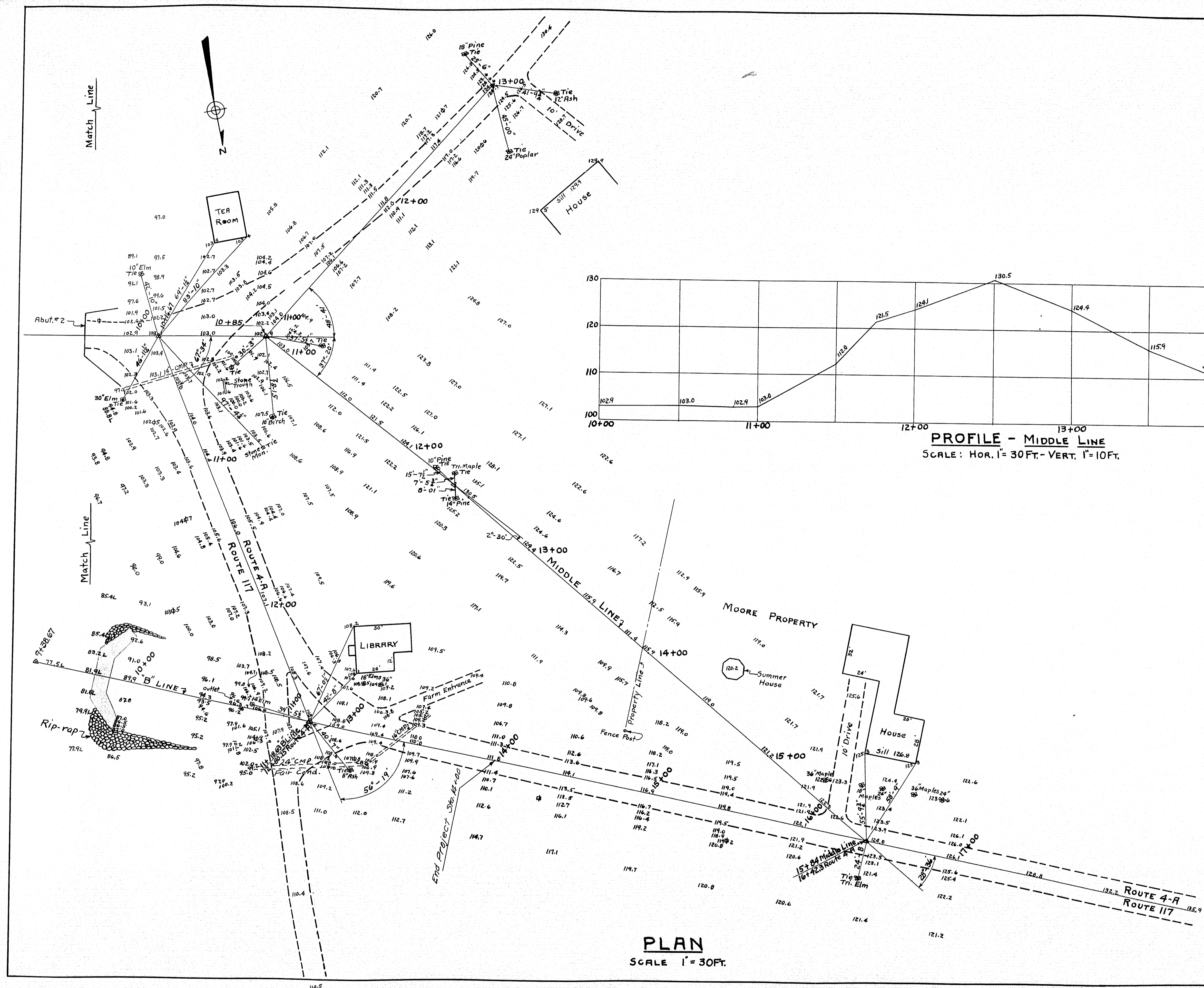
PROFILE EAST APPROACH - NORTH ROAD
SCALE: HOR. 1" = 30 FT. VERT. 1" = 10 FT.

SURVEY BLAKE
PLOTTED G.C.W.

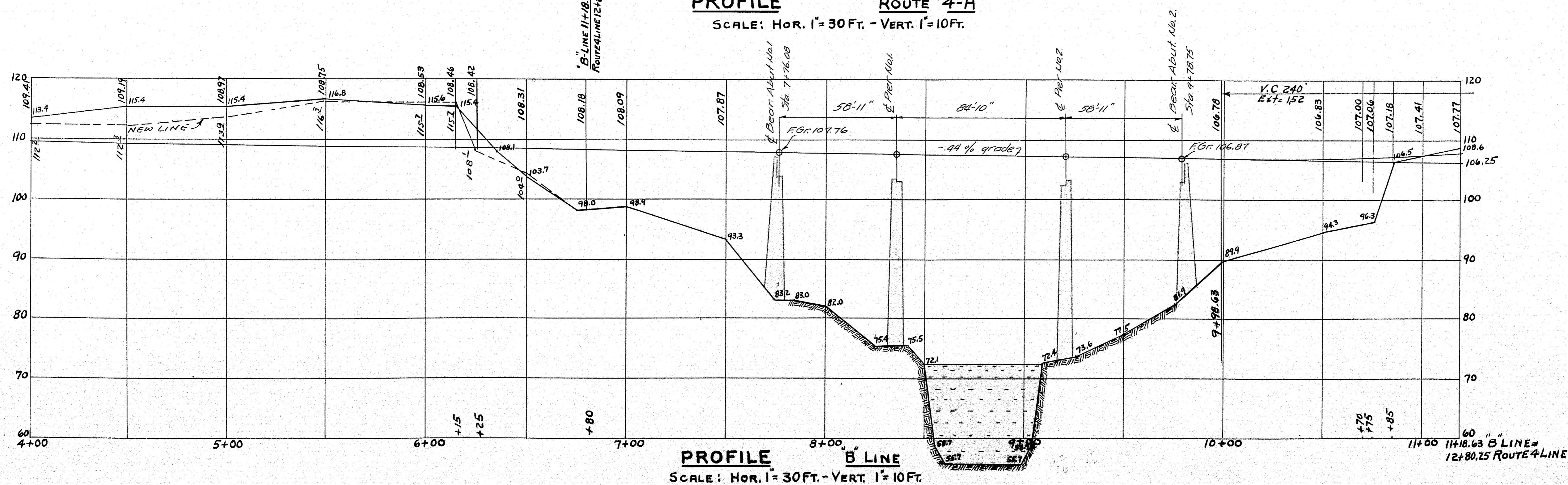
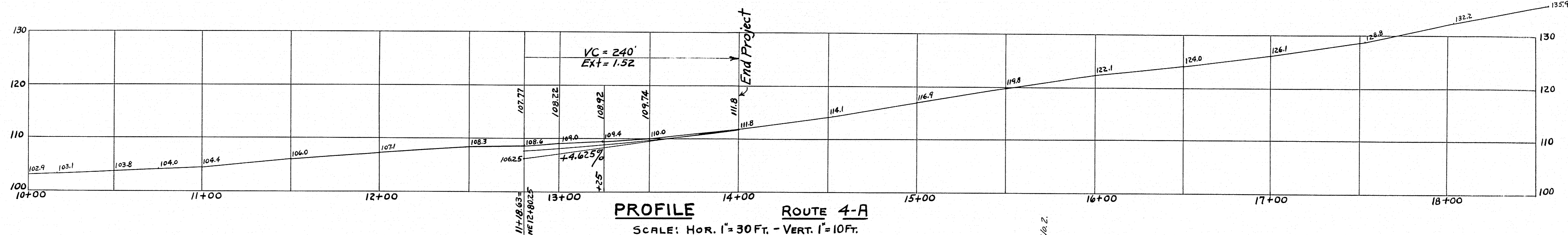
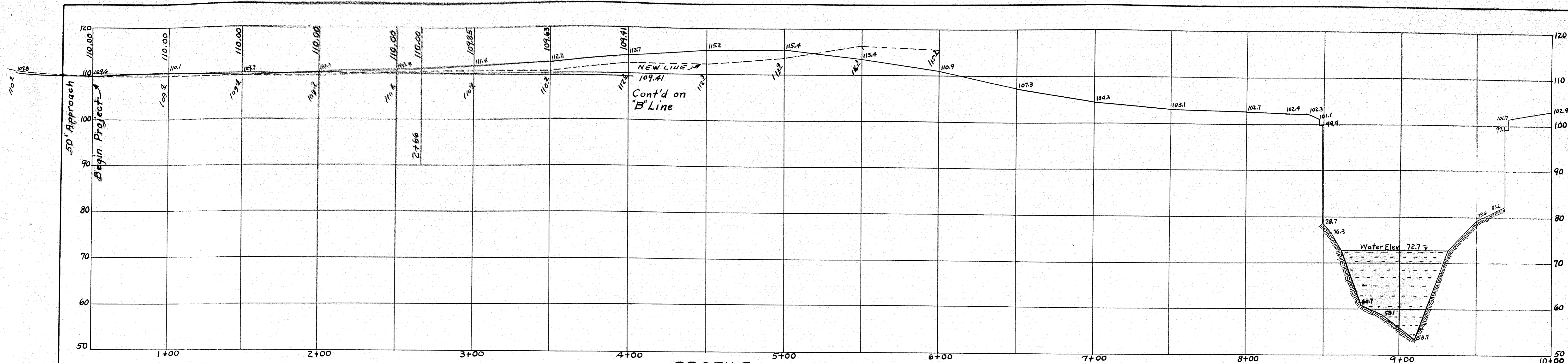
TOWN 16-09+16-05
BRIDGE 3708

STATE HIGHWAY COMMISSION
BRIDGE DIVISION
SALMON FALLS BRIDGE
OVER
SAGO - RIVER
BETWEEN THE TOWNS OF
HOLLIS AND BUXTON
YORK COUNTY
SURVEY PLAN

SHEET 1 OF 10 AUGUSTA, ME. FEB. 1947



SURVEY BLAKE	TOWN 16-09+16-05
PLOTTED G.W.W.	BRIDGE 3708
STATE HIGHWAY COMMISSION	
BRIDGE DIVISION	
SALMON FALLS BRIDGE	
OVER	
SACO RIVER	
BETWEEN THE TOWNS OF	
HOLLIS AND BUXTON	
YORK COUNTY	
SURVEY PLAN	
SHEET 2 OF 10 AUGUSTA, ME. FEB. 1947	



SURVEY BLAKE
PLOTTER G.G.W.

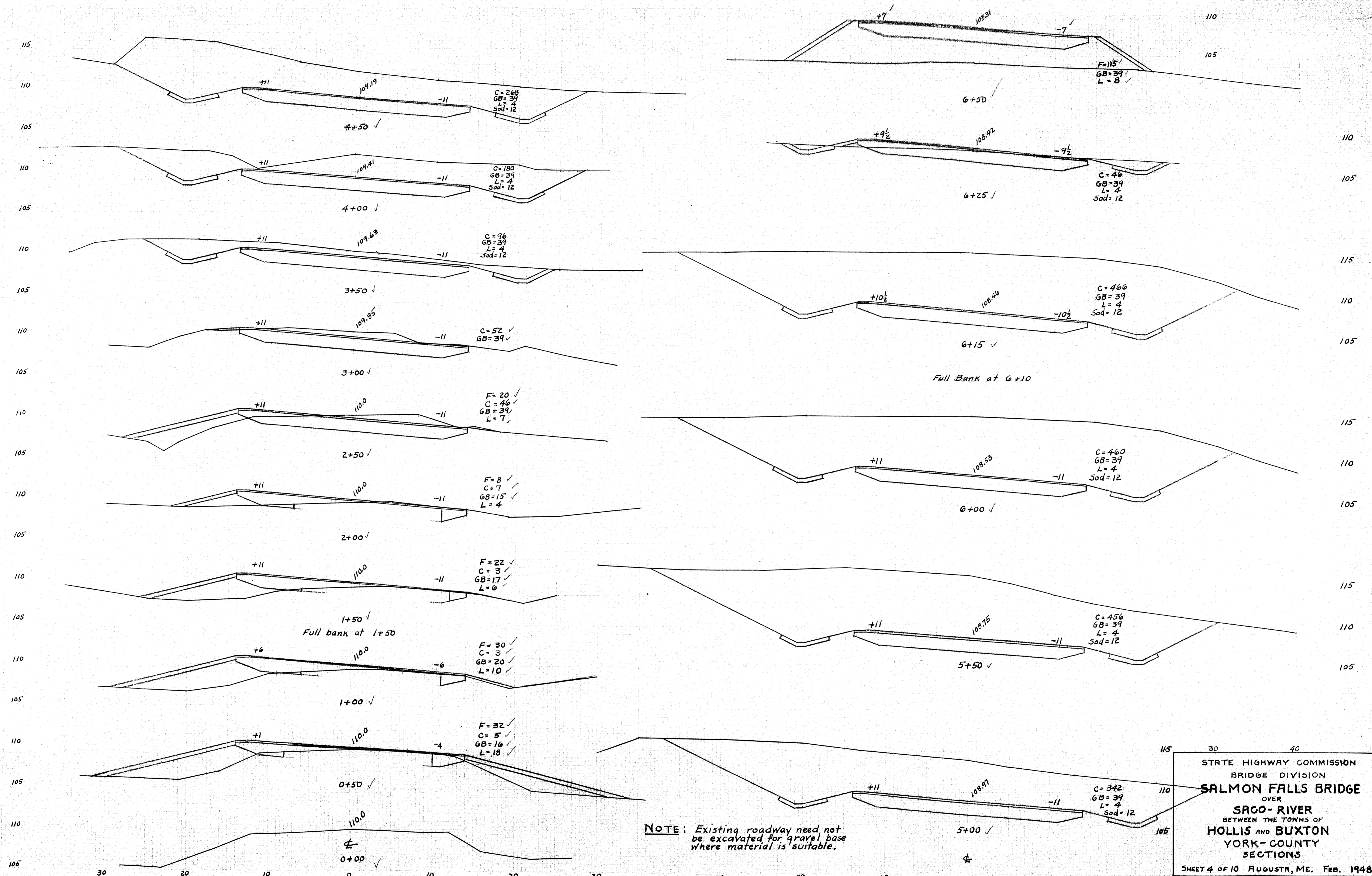
TOWN 16-09 + 16-05
BRIDGE 3108

STATE HIGHWAY COMMISSION
BRIDGE DIVISION
SALMON FALLS BRIDGE
OVER
SACO RIVER
BETWEEN THE TOWNS OF
HOLLIS AND BUXTON
YORK COUNTY
SURVEY PLAN

SHEET 3 OF 10 AUGUSTA, ME. FEB. 1947

47-123

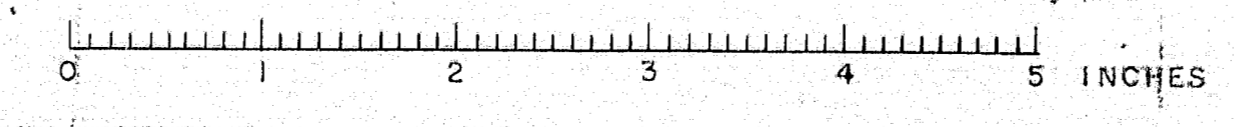
0 1 2 3 4 5 INCHES

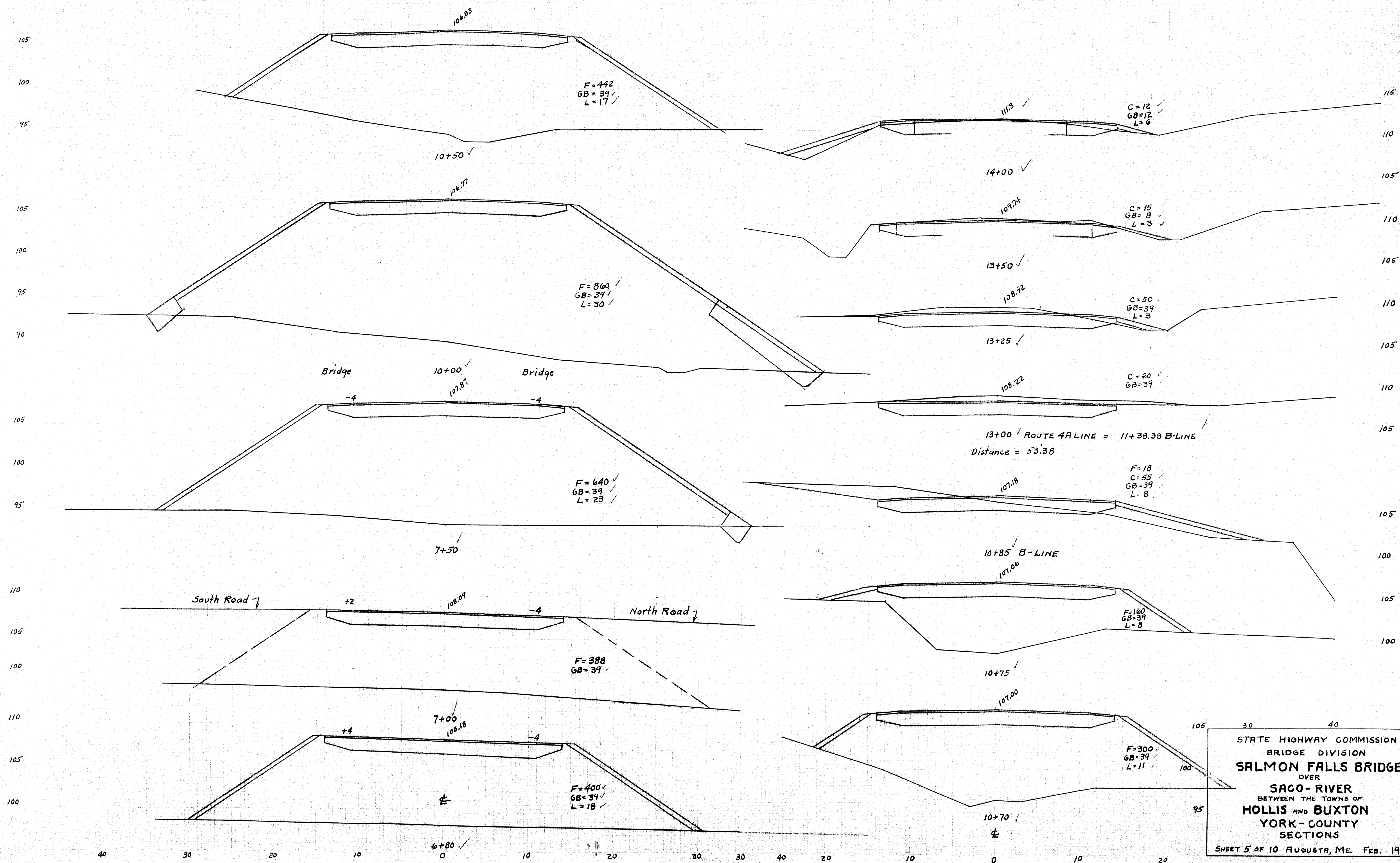


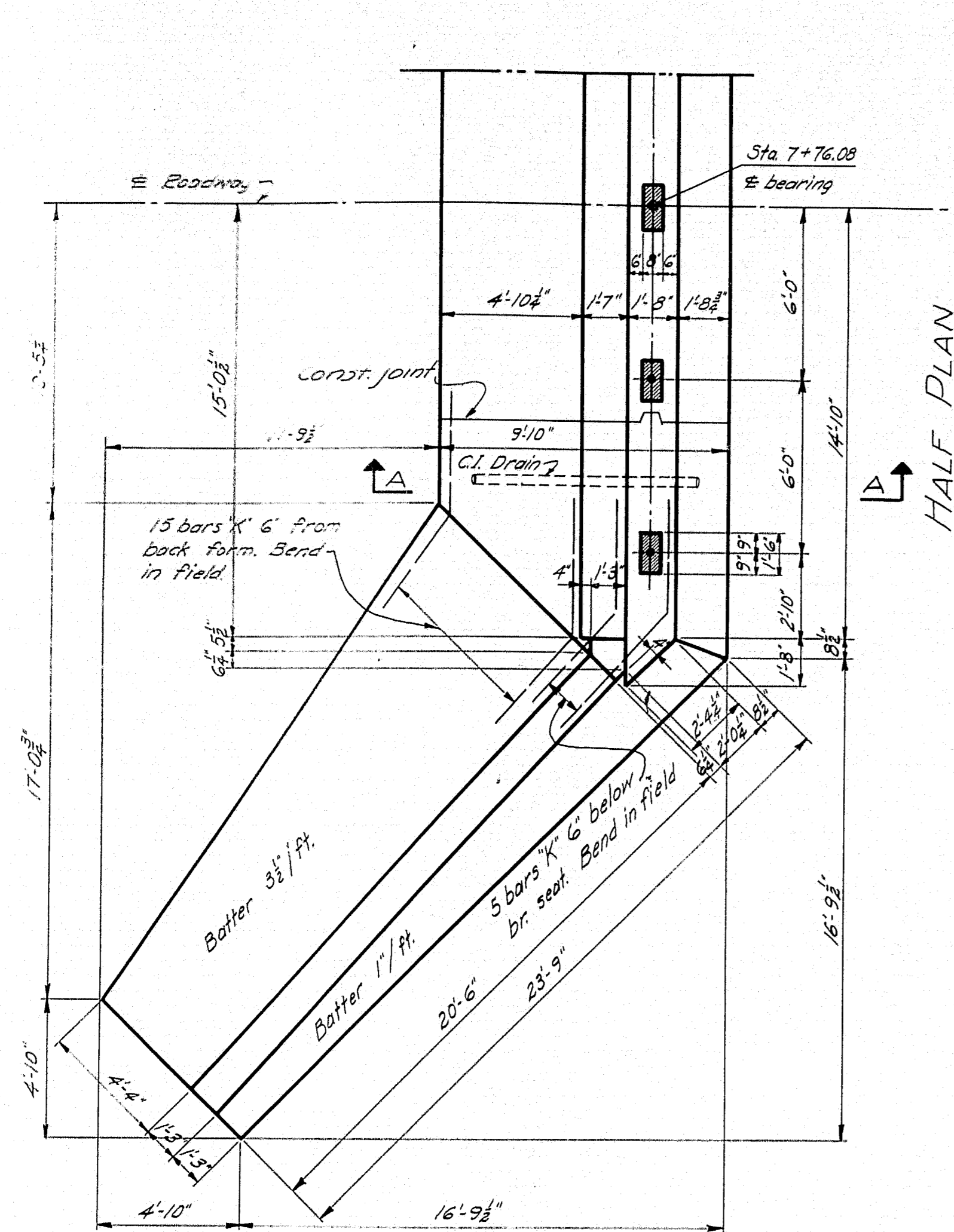
NOTE: Existing roadway need not be excavated for gravel base where material is suitable.

STATE HIGHWAY COMMISSION
BRIDGE DIVISION
SALMON FALLS BRIDGE
OVER
SAGO RIVER
BETWEEN THE TOWNS OF
HOLLIS AND BUXTON
YORK-COUNTY
SECTIONS
SHEET 4 OF 10 AUGUSTA, ME. FEB. 1948

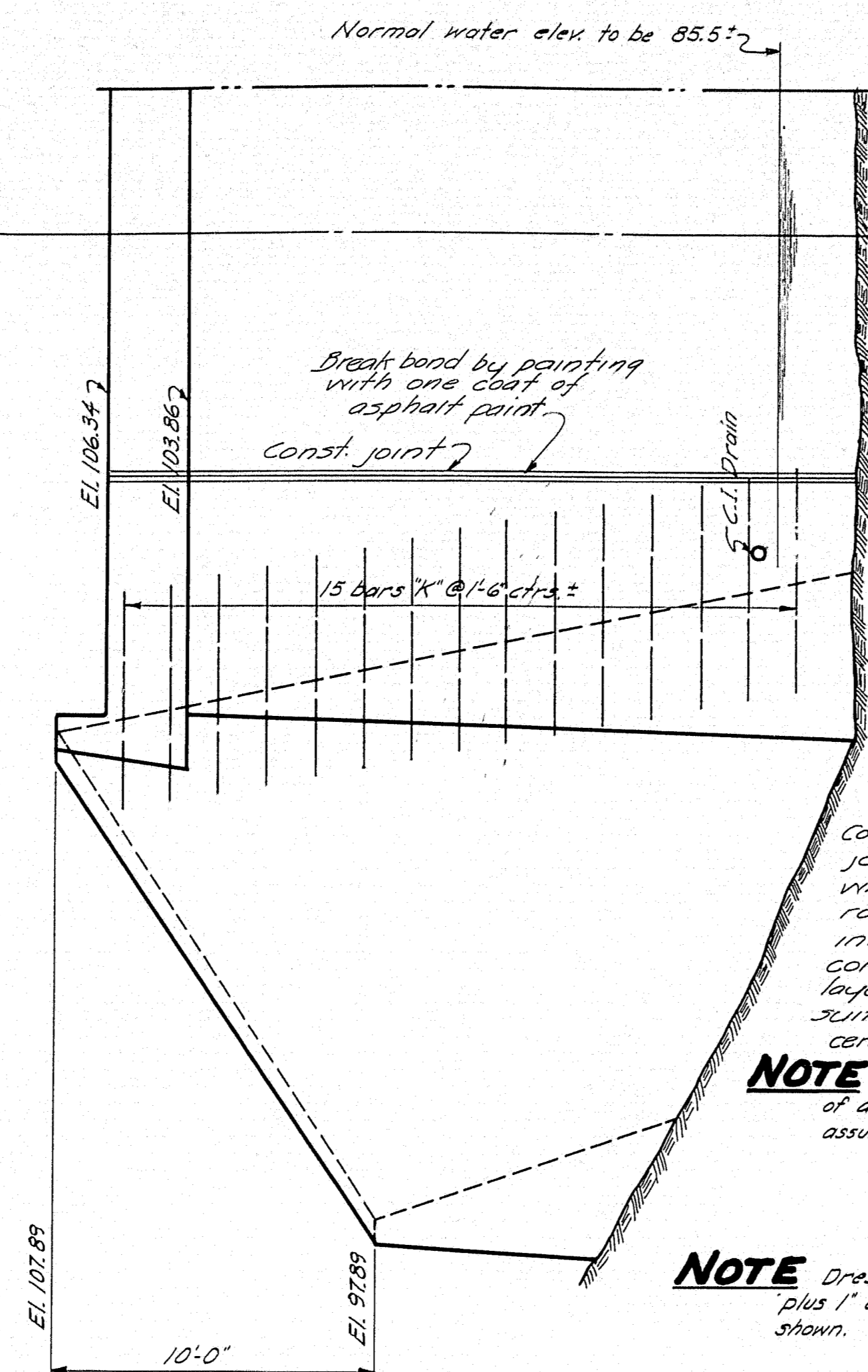
47-124







ABUTMENT No. 1



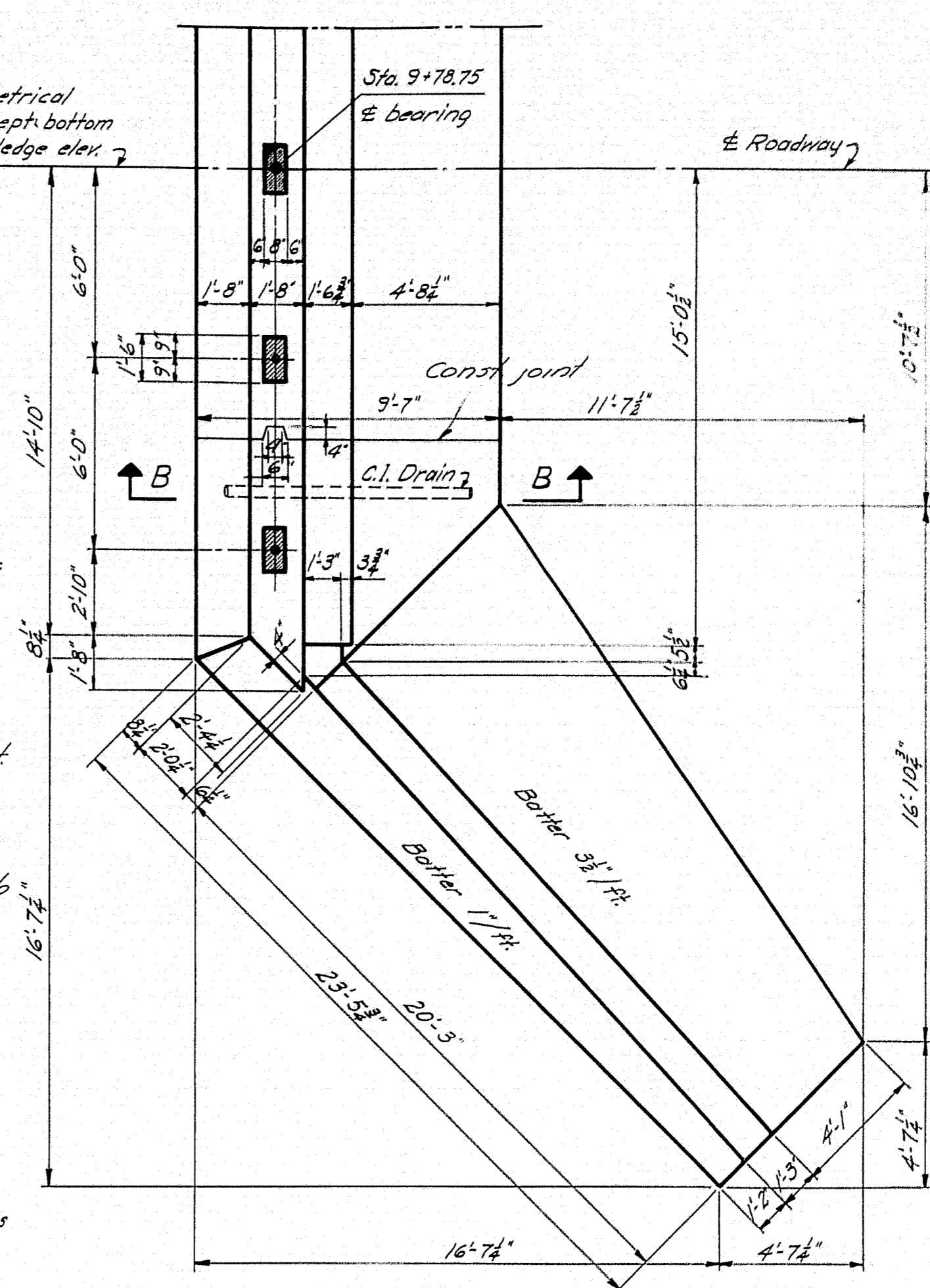
NOTE Abutments symmetrical about roadway, except bottom which is controlled by ledge elev.

NOTE Break bond by painting with one coat of asphalt paint.

NOTE 1" groove front of abutments. Both abuts similar.

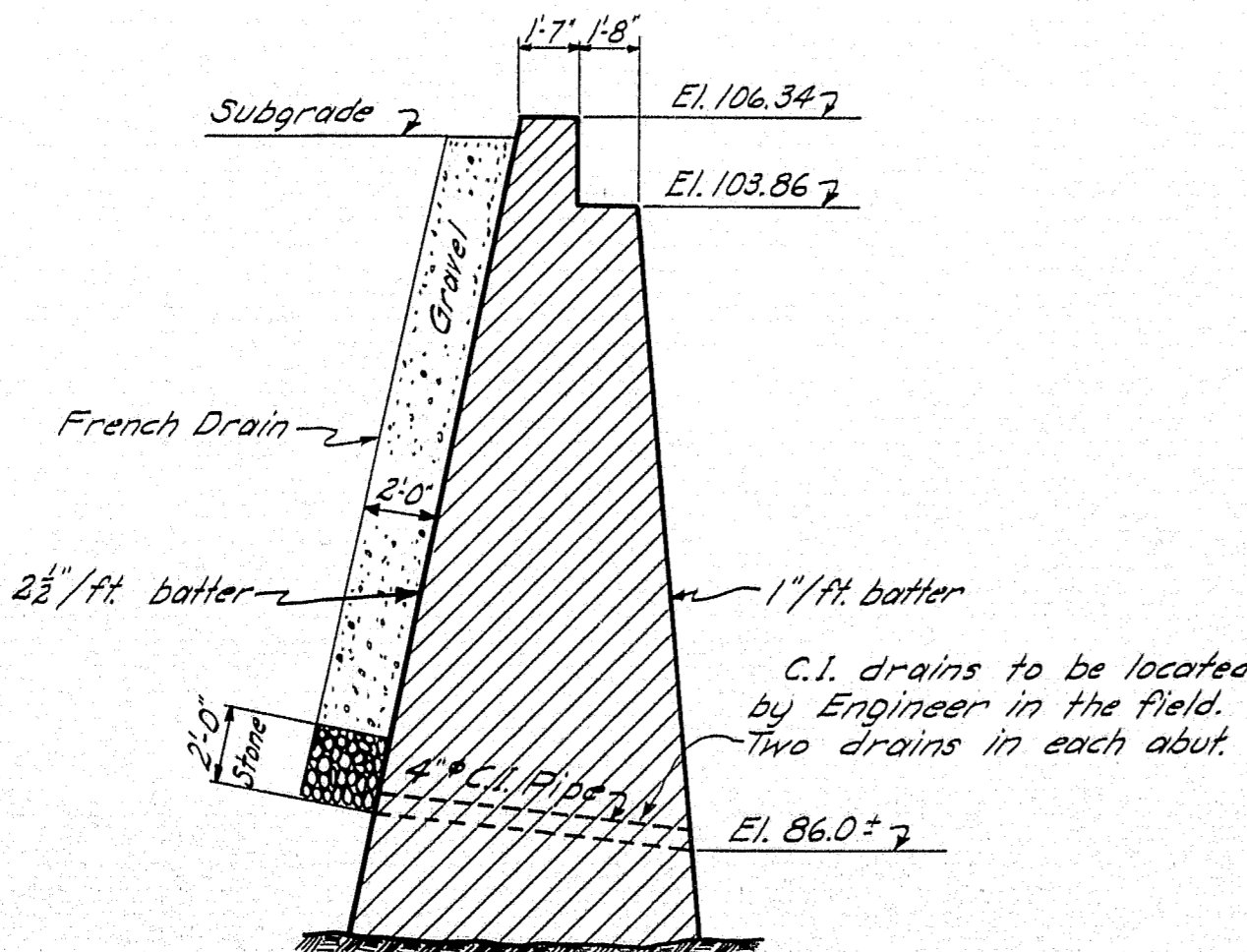
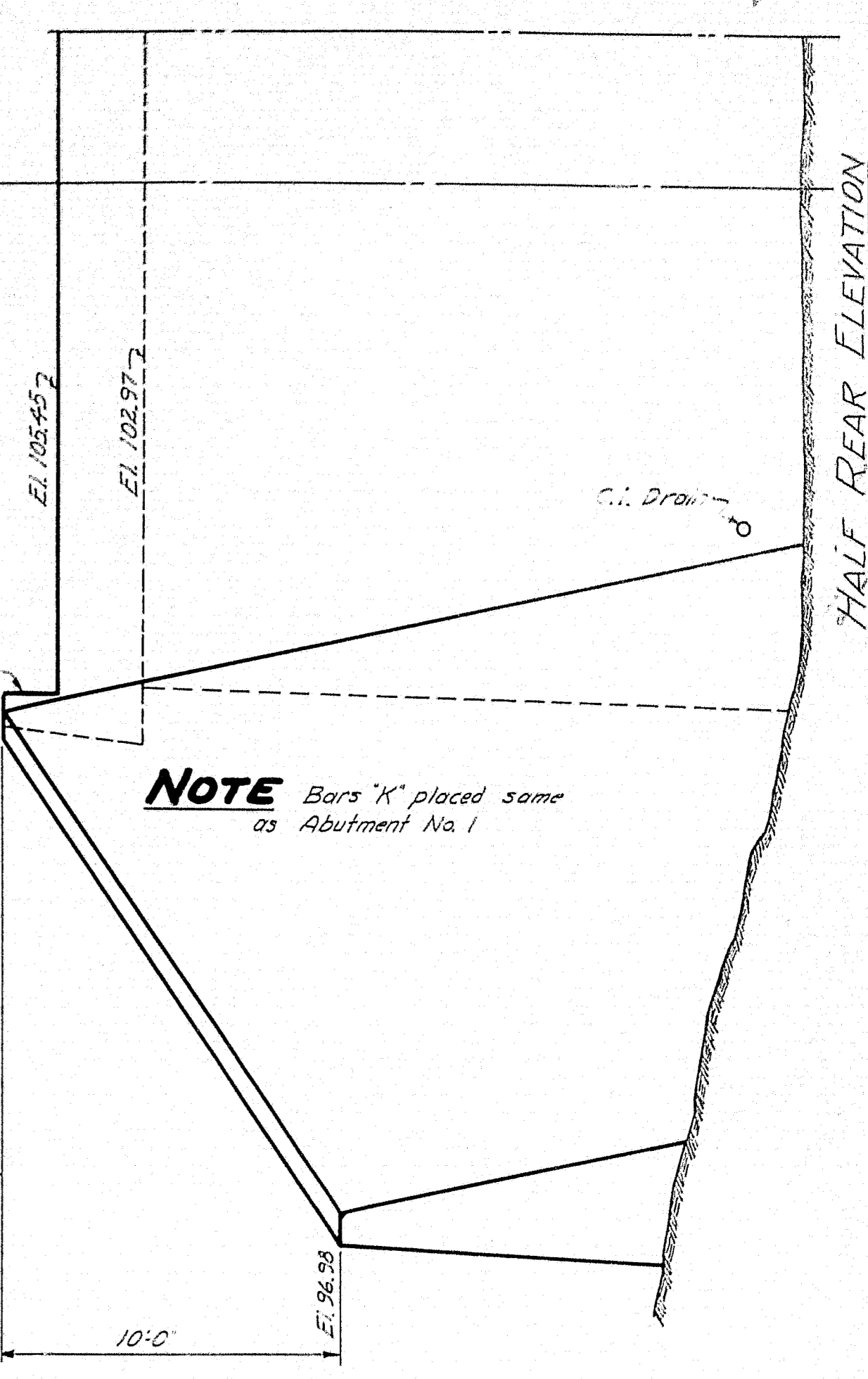
NOTE All dimensions for base of abutments are for an assumed elevation 83.0.

NOTE Dress shaded bearing areas, plus 1" all around, to exact elevations shown.

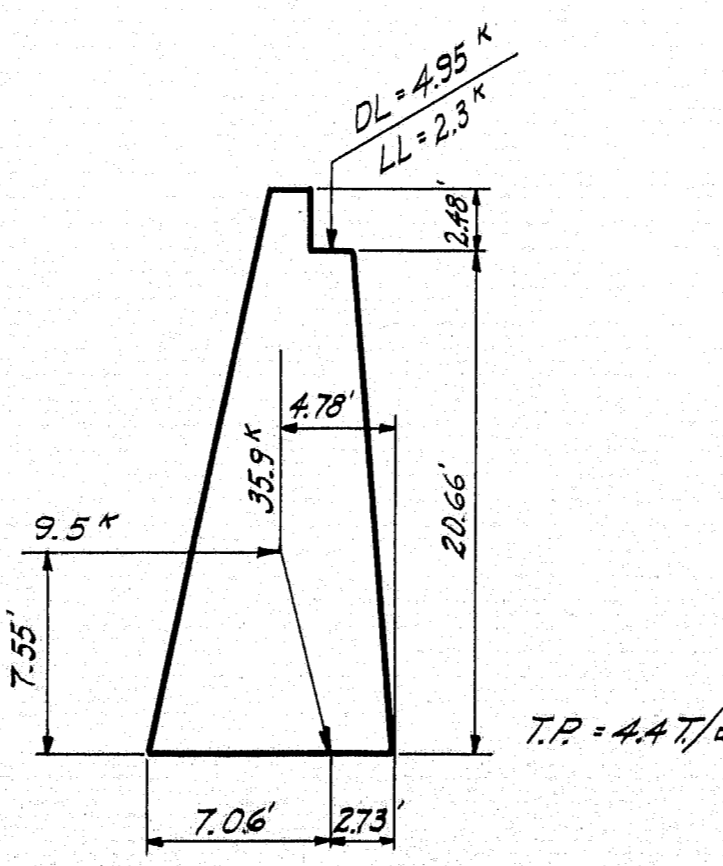


ABUTMENT No. 2

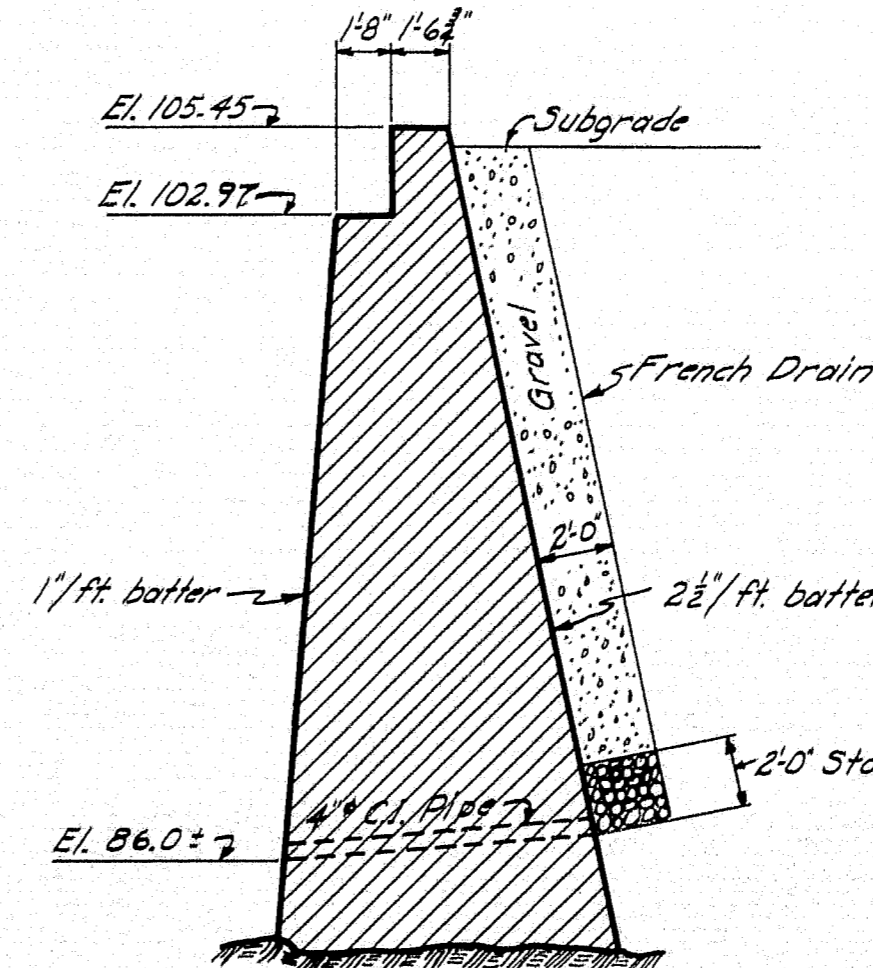
NOTE Bars 'K' placed same as Abutment No. 1.



SECT. A-A

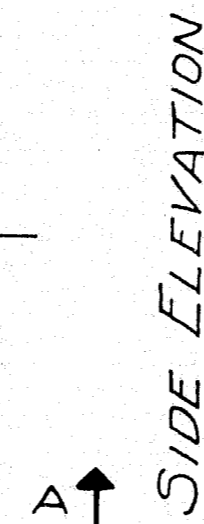


ABUT. ANALYSIS



SECT. B-B

DESIGN - EVERETT	BRIDGE - 3708
TRACE - CLARK	
CHECK - FJ	
STATE HIGHWAY COMMISSION	
BRIDGE DIVISION	
SALMON FALLS BRIDGE	
OVER	
SACO RIVER	
BETWEEN THE TOWNS OF	
HOLLIS & BUXTON	
YORK COUNTY	
ABUTMENTS - 1 & 2	
SHEET 7 OF 10 AUGUSTA, MAINE JUNE 1947	



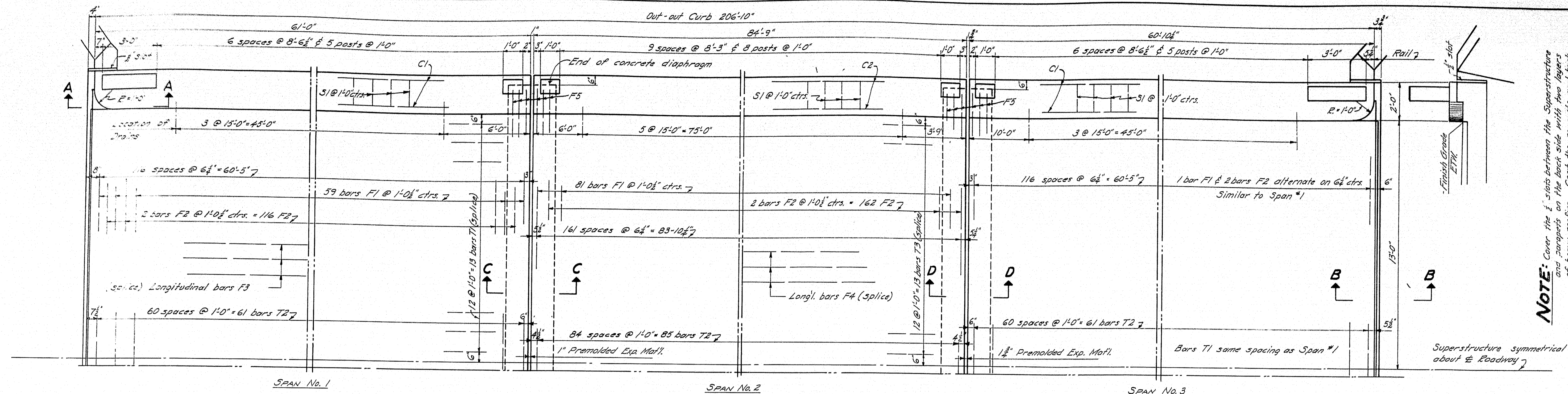
DESIGN - EVERETT
TRACE - CLARK
CHECK - *Pd.*

BRIDGE - 3708

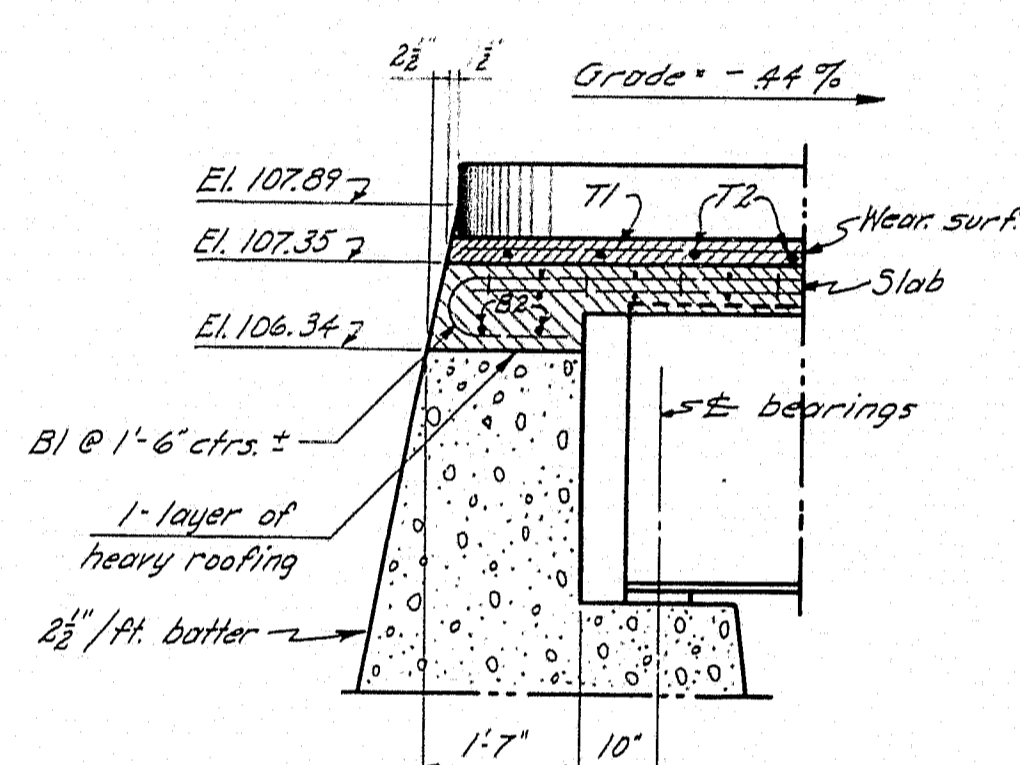
STATE HIGHWAY COMMISSION
BRIDGE DIVISION

SALMON FALLS BRIDGE
OVER
SACO RIVER
BETWEEN THE TOWNS OF
HOLLIS & BUXTON
YORK COUNTY
PIERS - 1 & 2

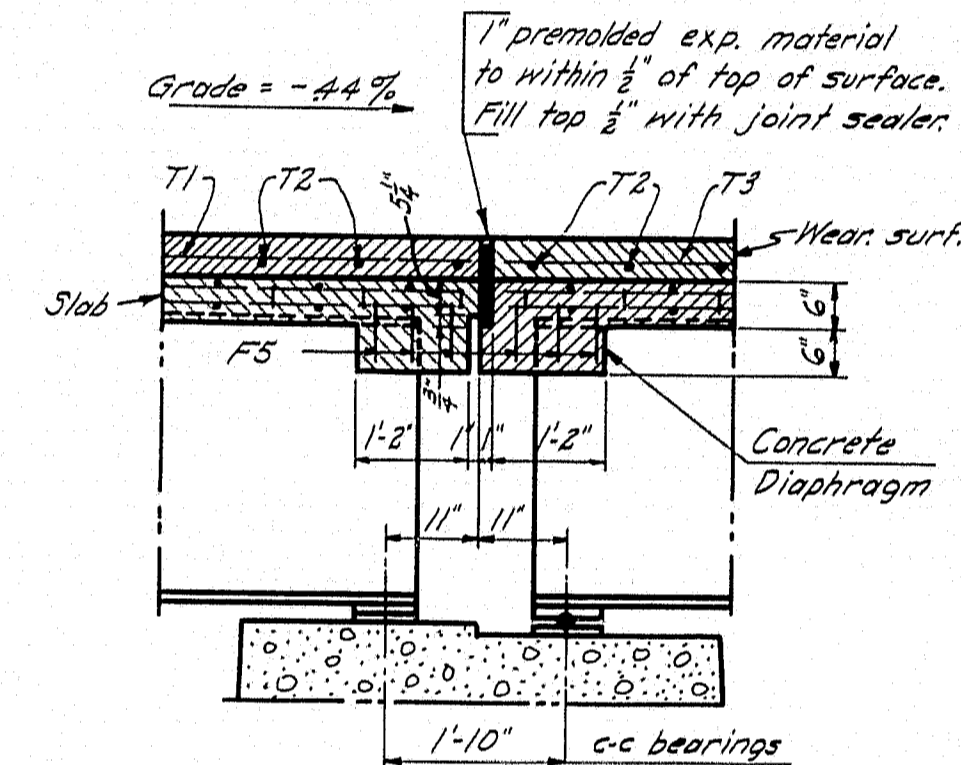
SHEET 8 OF 10 AUGUSTA, MAINE JUNE 1947



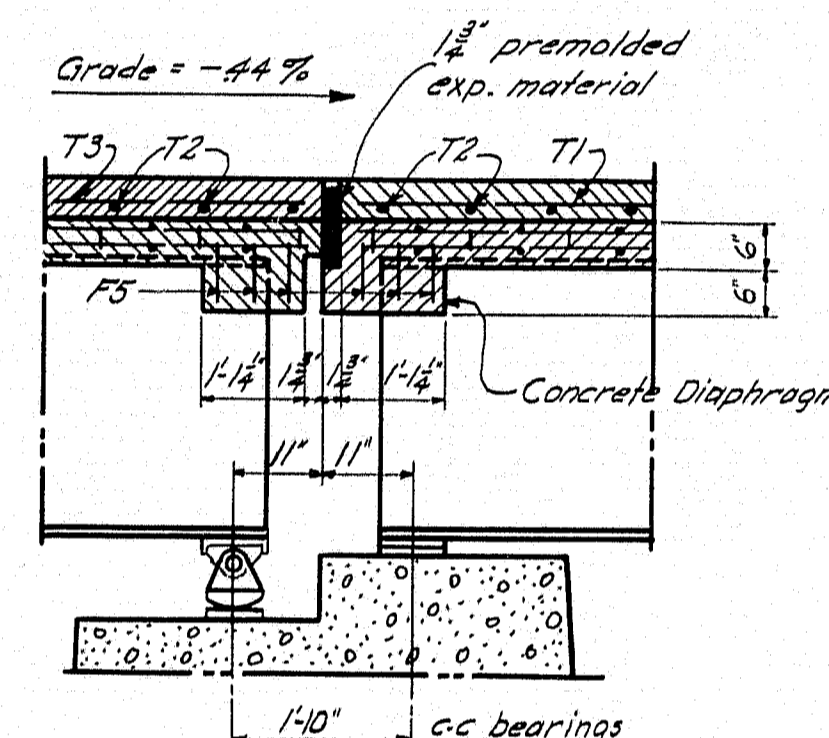
NOTE: Cover the $\frac{1}{2}$ " starts between the Superstructure and parapets on the back side with two layers of heavy roofing. Coat the concrete and back of each layer as applied with a suitable grade of roofing cement. Roofing to be 10" wide and to be recessed $\frac{1}{4}$ " by nailing thin strips to the



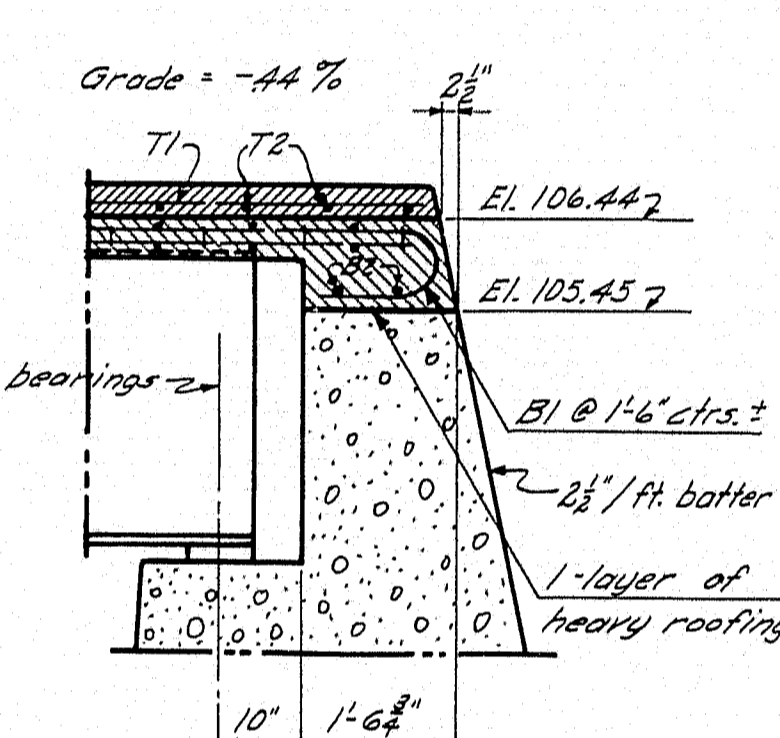
SECTION A-A
Abut. #1 - at face of curb



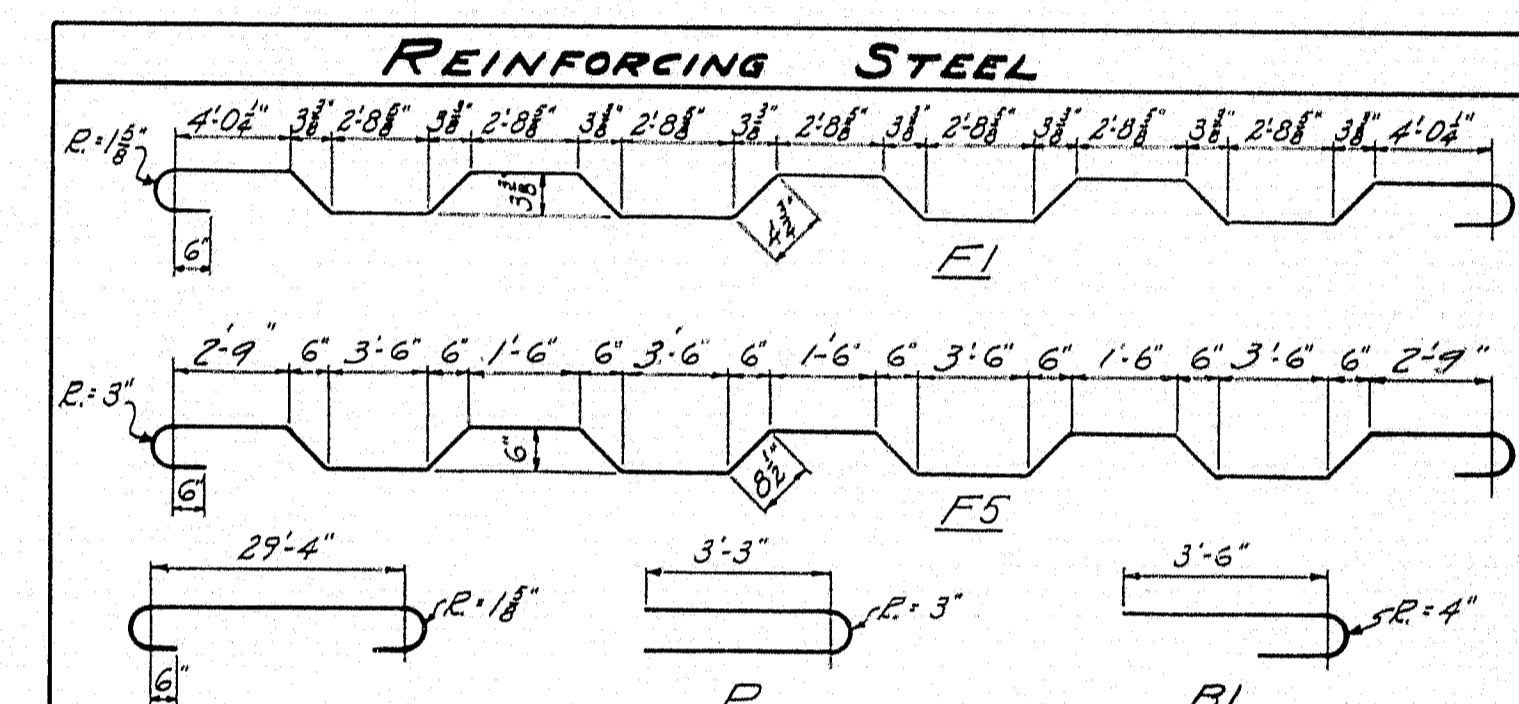
SECTION C-C
At Pier No. 1



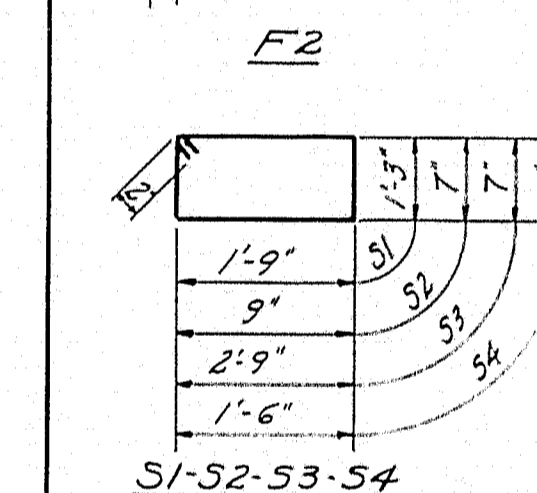
SECTION D-D
At Pier No. 2
Details not shown sim. to Sect. C-C



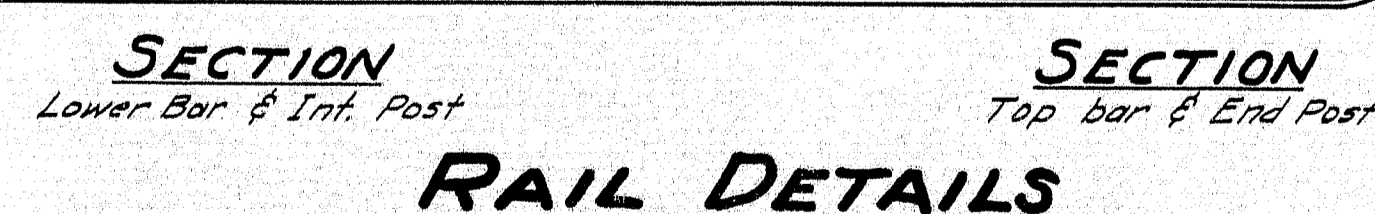
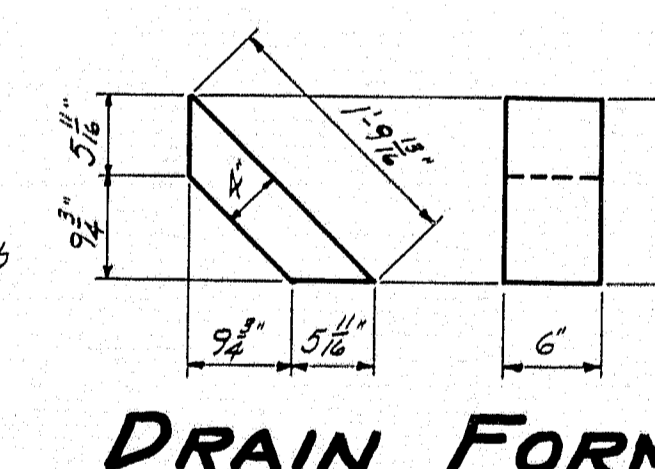
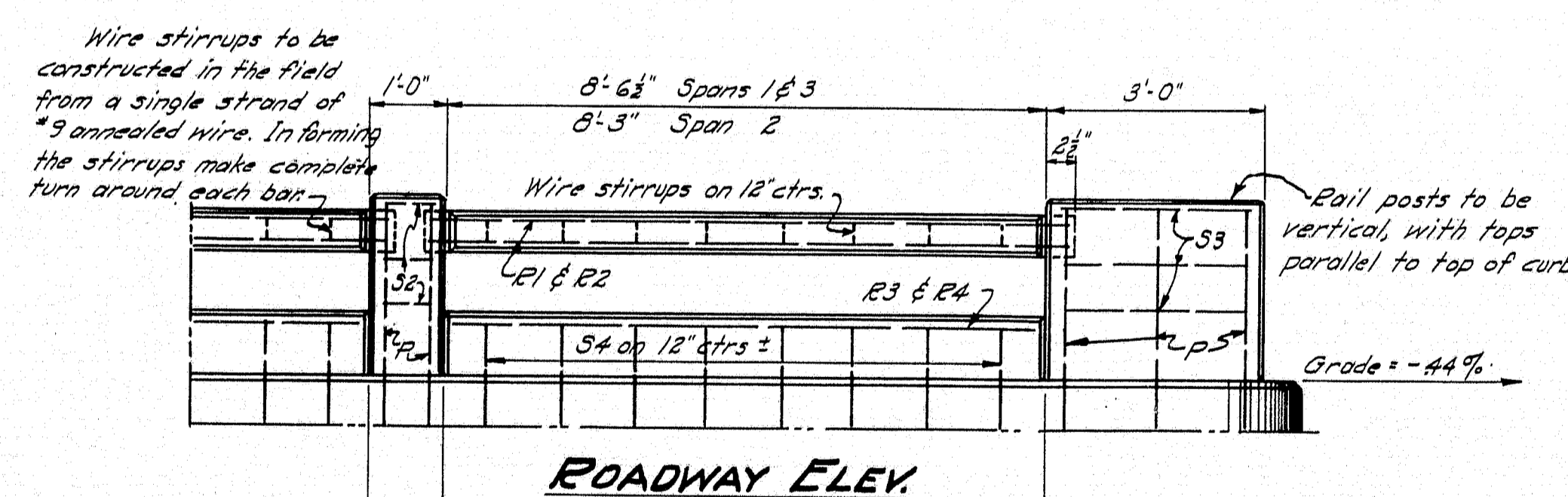
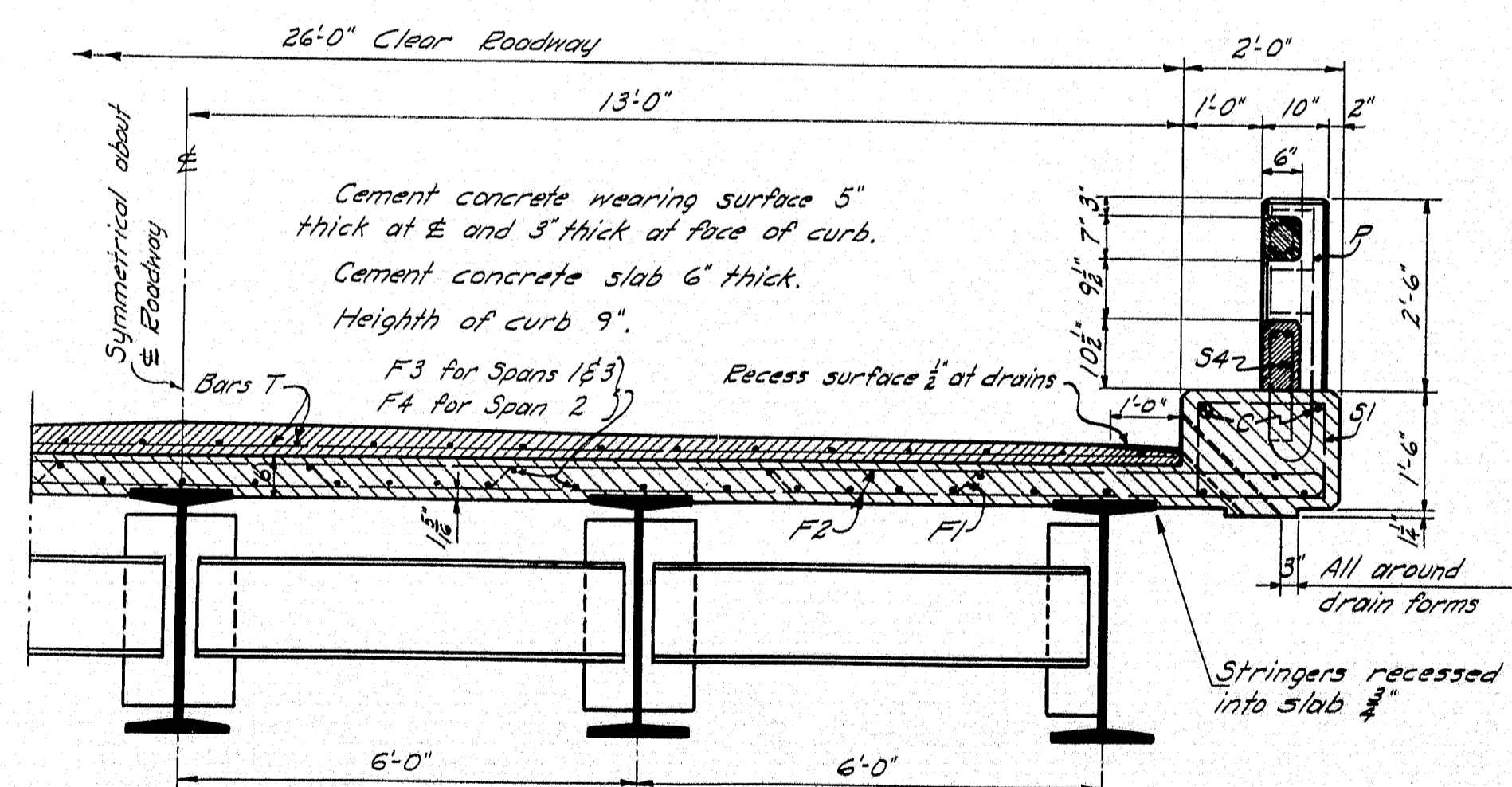
SECTION B-B
At Abut. # 2



BENT BARS			
Mark	Size	No. Length	Remarks
B1	1" #8	40 5'-3"	Slab - @ abuts
F1	1" #8	199 32'-0"	Slab - Spans 1, 2, 3
F2	1" #8	394 31'-2"	" " " 1, 2, 3
F5	1" #8	12 32'-3"	" @ Piers
P	1" #8	100 7'-3"	Rail Posts
S1	1" #8	414 6'-4"	Curbs
S2	1" #8	132 3'-0"	Int rail posts
S3	1" #8	12 7'-0"	End rail posts
S4	1" #8	336 3'-10"	Bottom rail bar



STRAIGHT					BAYS				
Mark	Size	No.	Length	Remarks	Mark	Size	No.	Length	Remarks
F3	1/2"	172	31'-6"	Slab Spans 1-3 (splice)	B2	1/2"	4	29'-8"	Slab Diaph. - Abut.
F4	1/2"	129	29'-6"	" - Span 2 (")	K	1/2"	80	8'-0"	Abuts. bend in Pier
C1	1/2"	16	31'-6"	Curb-Span 1-3 (")	A1	1/2"	56	27'-0"	Piers 1-2
C2	1/2"	12	29'-6"	Curb-Span 2 (")	A2	1/2"	56	14'-9"	Pier 1
T1	1/2"	104	31'-6"	W. surf. Spans 1-3 (")	A3	1/2"	56	15'-3"	Pier 2
T2	1/2"	207	25'-9"	W. surf. Spans 1-2-3	P3	1/2"	48	8'-5"	Full - Spans 1-3
T3	1/2"	208	25'-9"	W. surf. Span 2 (Splice)	E4	1/2"	56	8'-1"	" - Span 2
E1	1/2"	96	8'-11"	Full Span 1-3					
E2	1/2"	72	8'-7 1/2"	Full Span 2					



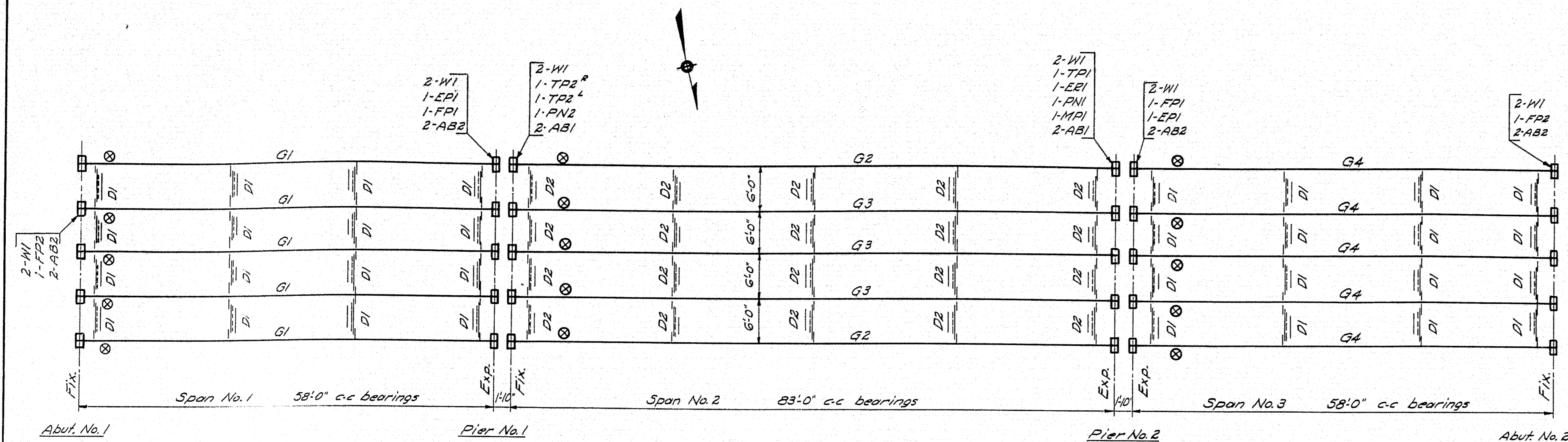
RAIL NOTE

Curb to be cast with slab. Steel for posts & lower bar to be in position before curb is placed.
Cast lower bar in place. Precast top bar & set in position so that ends project into post forms 2 1/2". Wrap tongue ends with two layers of heavy roofing. Build post forms & cast posts.
Chamfer exposed edges of concrete 1/2" unless otherwise indicated.

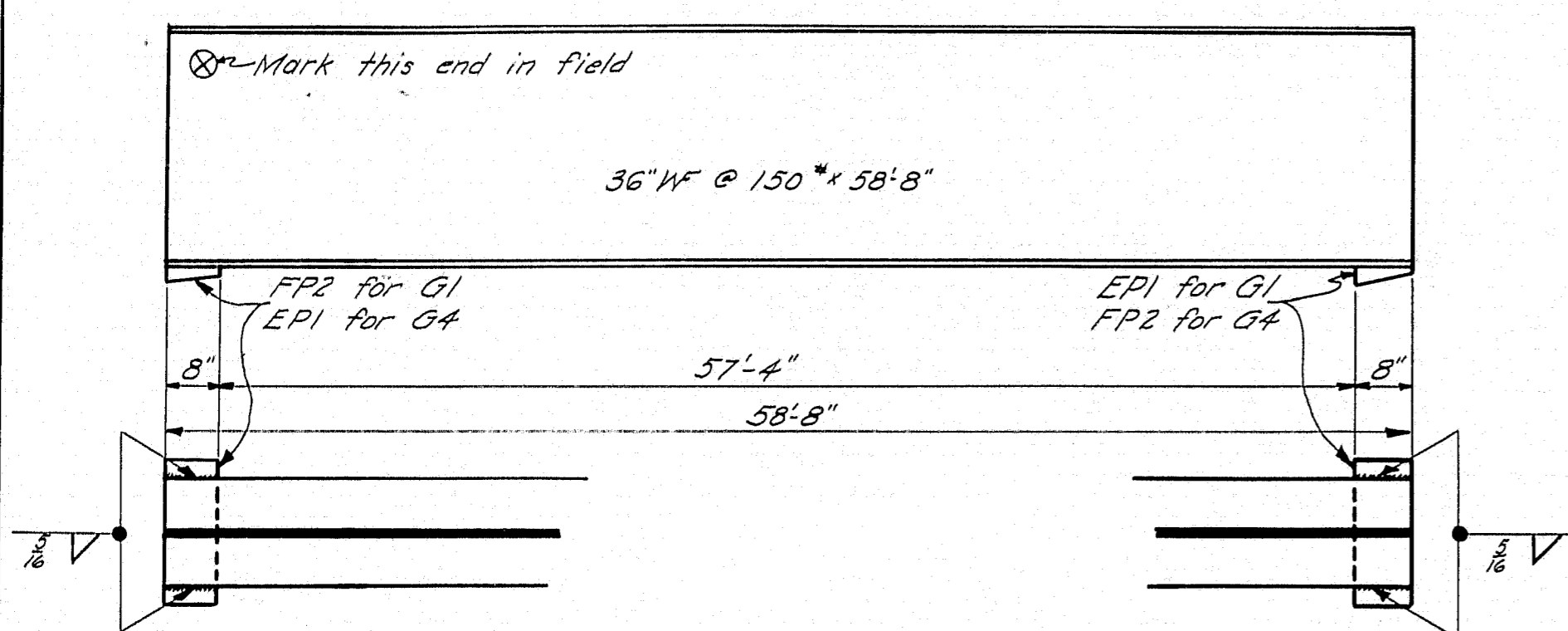
DESIGN

Loading H15-44
 $f_s = 18,000 \text{ psi}$
 $f_c = 1,000 \text{ psi}$
 $n = 10$

DESIGN - EVERETT TRACE - CLARK CHECK - <u>FD</u>	BRIDGE - 3708
STATE HIGHWAY COMMISSION BRIDGE DIVISION	
SALMON FALLS BRIDGE	
OVER	
SACO RIVER	
BETWEEN THE TOWNS OF	
HOLLIS & BUXTON	
YORK COUNTY	
SUPERSTRUCTURE	
SHEET 9 OF 10 AUGUSTA, MAINE JUNE 1941	

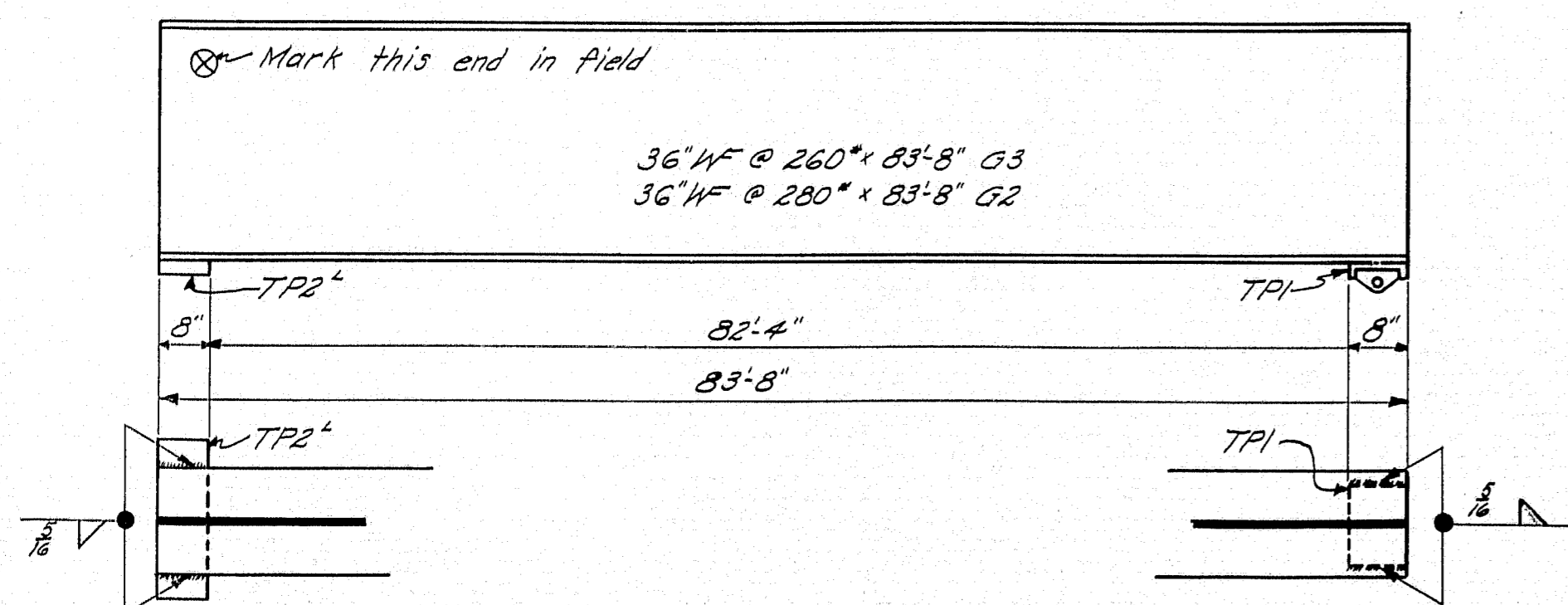


ERECTION DIAGRAM



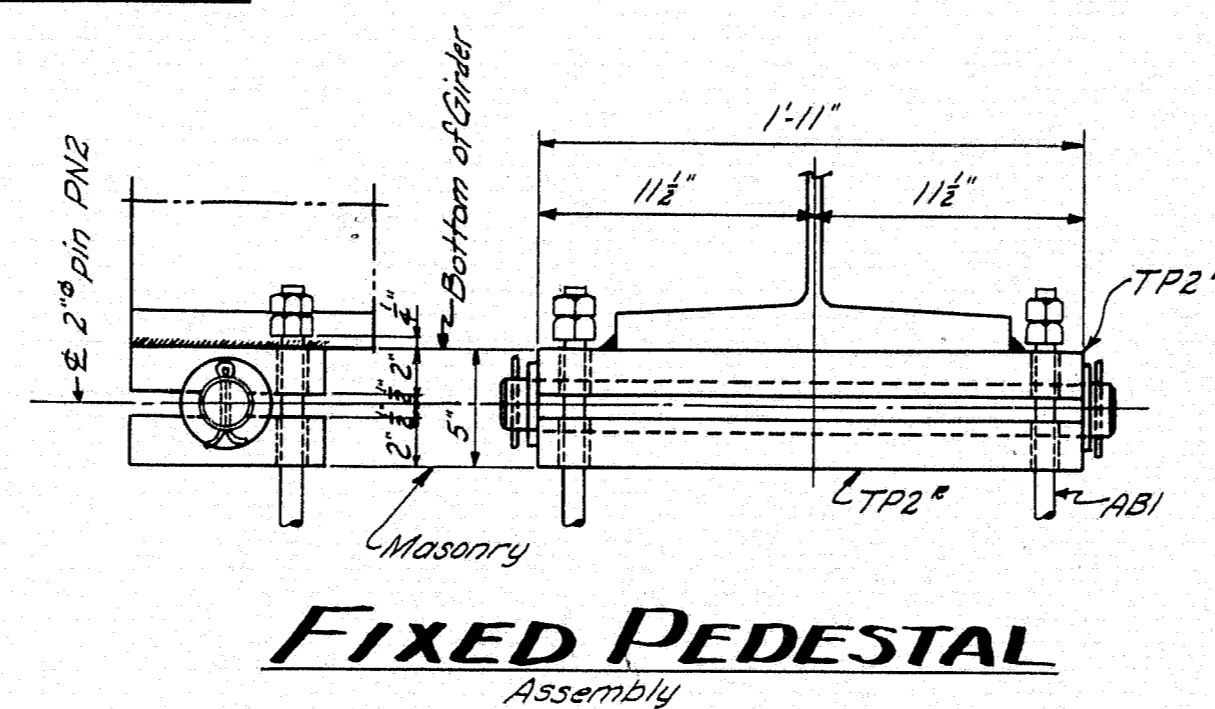
GIRDERS - G1 & G4

G1 - 5-Required
G4 - 5-Required
Roll 1" Camber G1 & G4



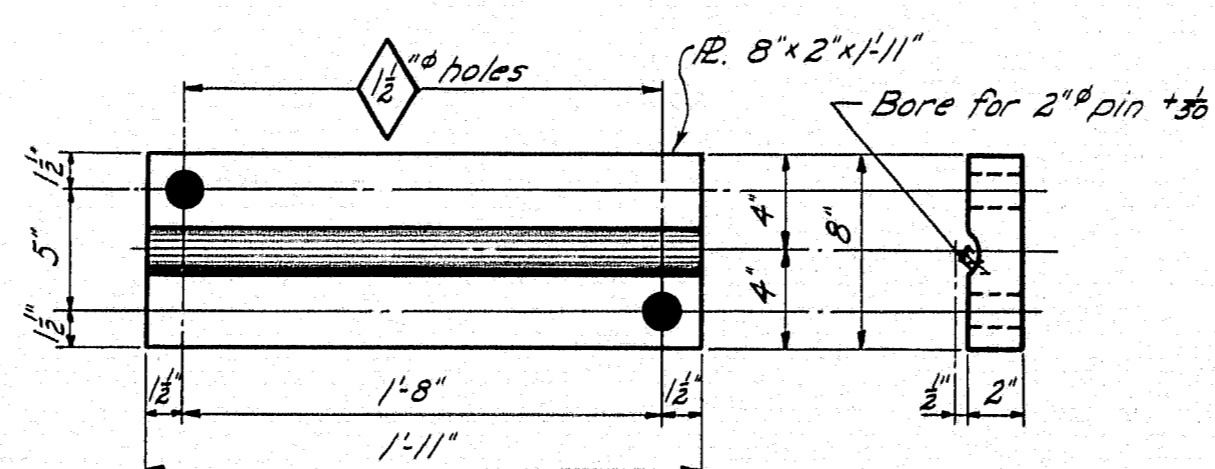
GIRDERS - G2 & G3

G2 - 2-Required
G3 - 3-Required
Roll 2 1/2" Camber G2 & G3



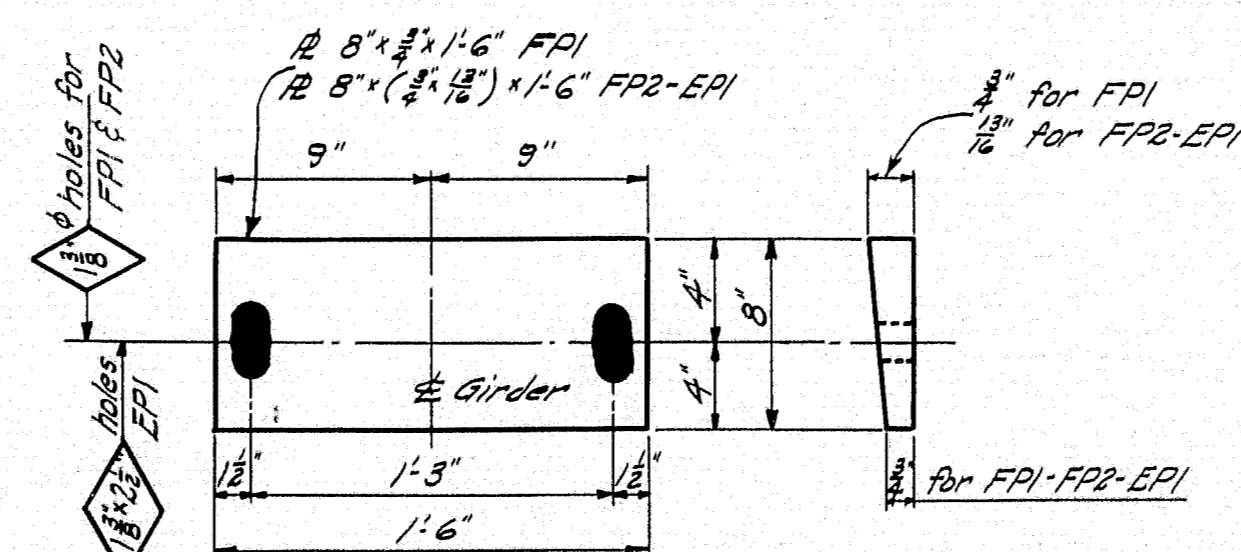
FIXED PEDESTAL

Assembly



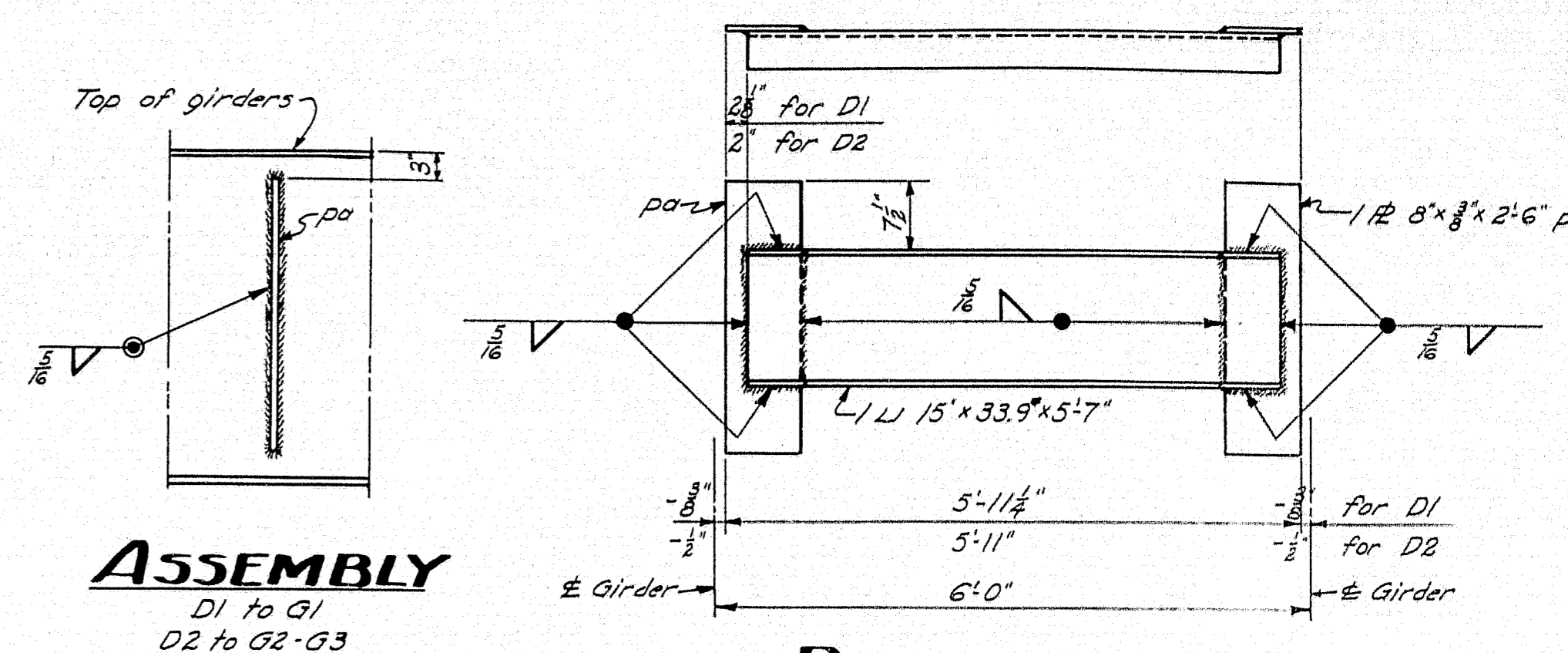
PLATES - TP2 & TP2L

TP2 - as shown - 5-Reqd.
TP2L - opp. hand - 5-Reqd.



PLATES - FPI, FP2, EPI

FPI - 10-Required
FP2 - 10-Required
EPI - 10-Required



ASSEMBLY

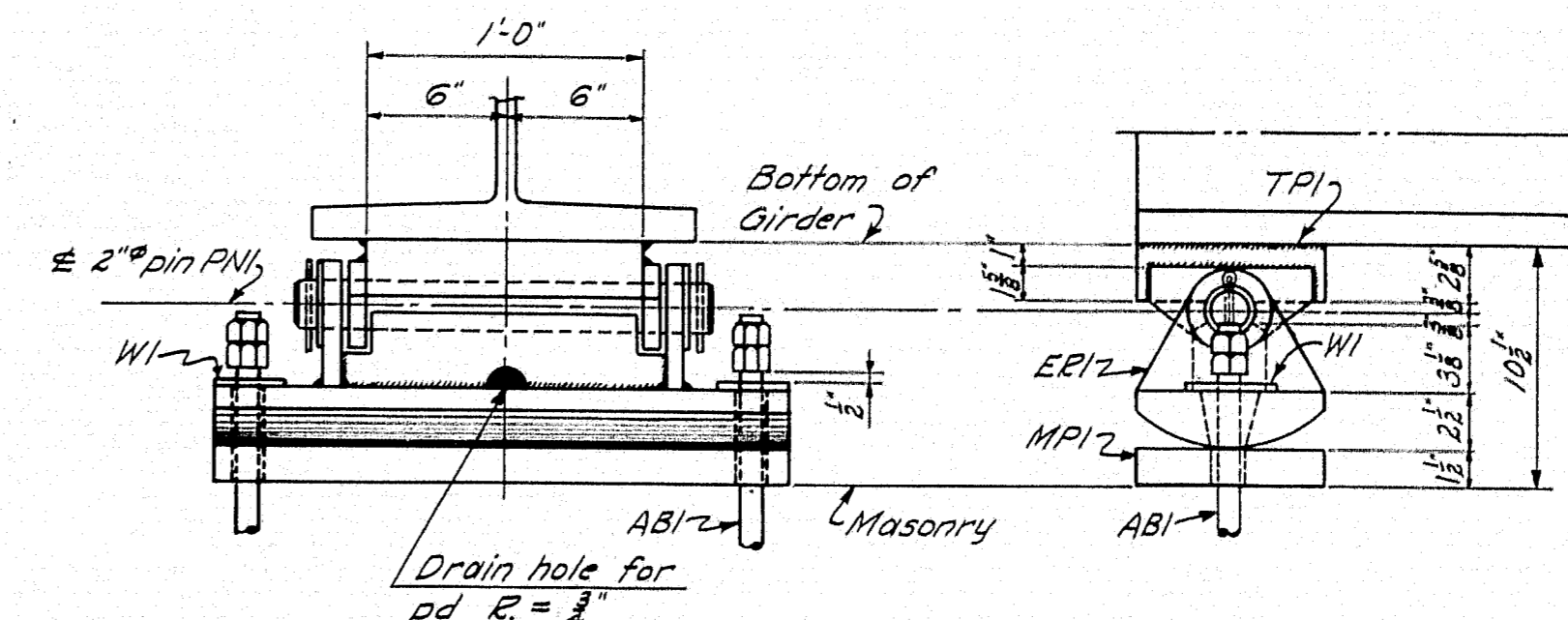
D1 to G1
D2 to G2-G3

DIAPHRAGMS

D1 - 32-Required
D2 - 20-Required

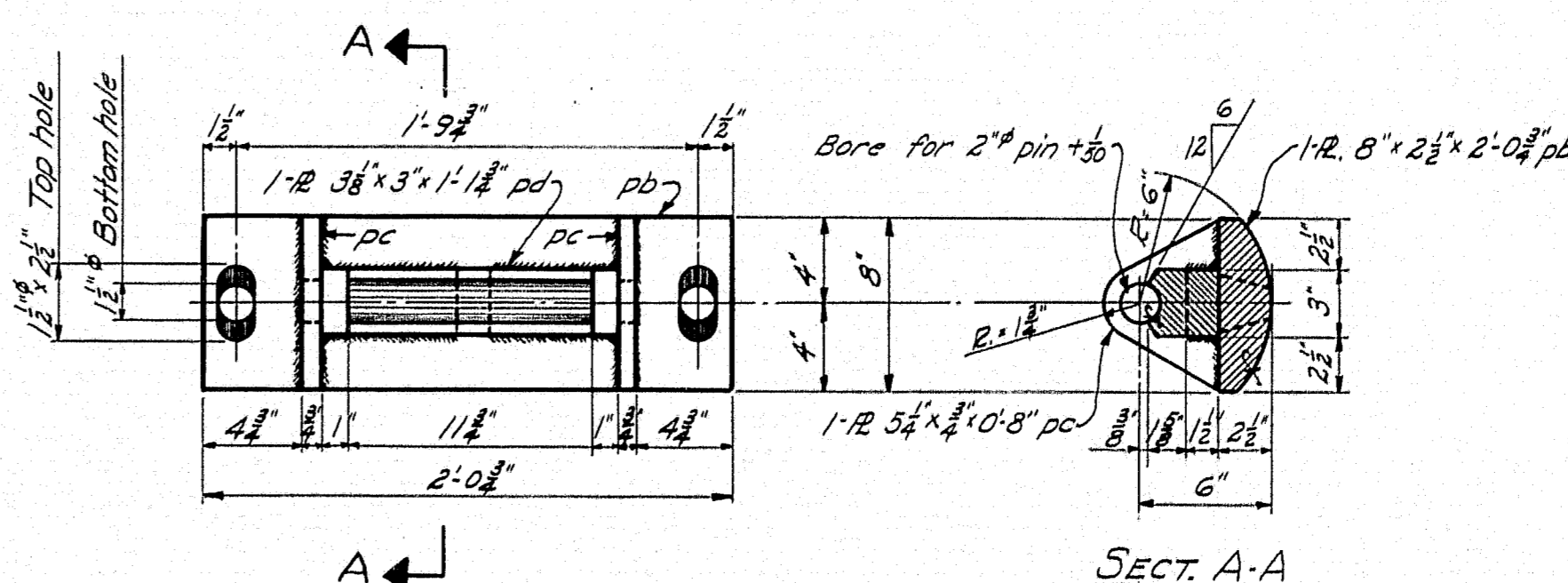
WASHER - WI

60-Required



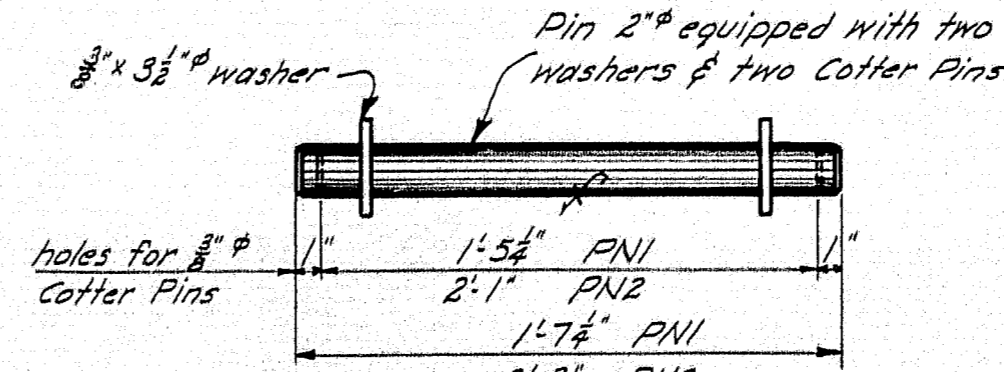
EXPANSION PEDESTAL

Assembly



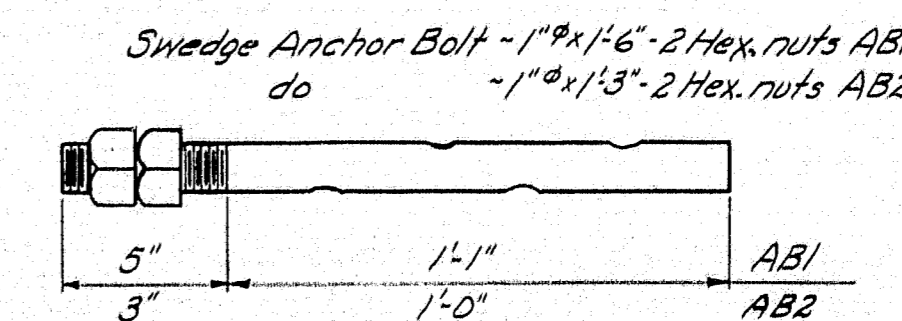
ROCKER - ERI

5-Required
Welds 3/8" Fillet (Shop)



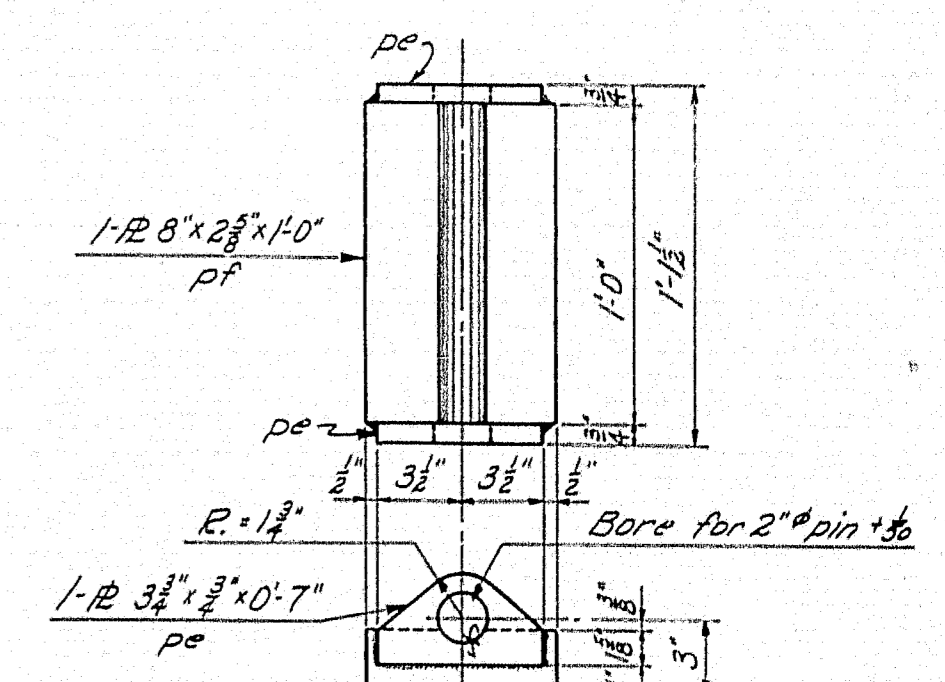
PINS

PN1 - 5-Required
PN2 - 5-Required



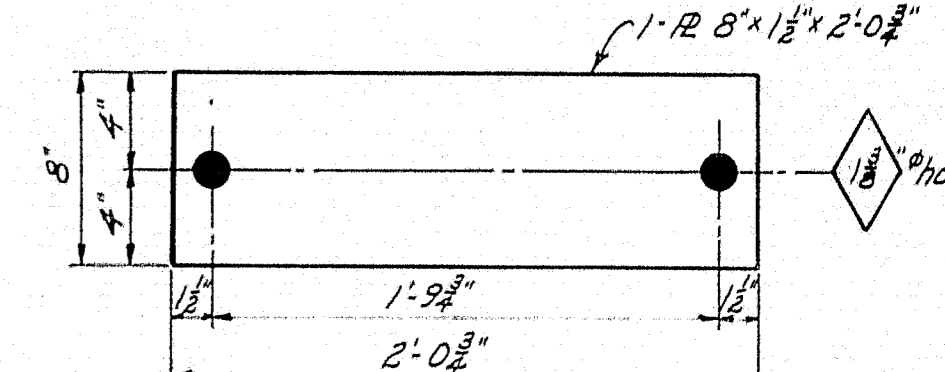
ANCHOR BOLTS

AB1 - 20-Required
AB2 - 40-Required



TOP PLATE - TPI

5-Required
Welds 3/8" Fillet (Shop)



MASONRY PLATE - MPI

5-Required

SPECIFICATIONS

State of Maine, State Highway Commission,
Bridge Division, Steel Highway Bridges, Nov. 1945

PAINTING

Shop contact surfaces not painted.
Machine finished surfaces to be coated with
a hot mixture of white lead and tallow, or other
approved coating.

DESIGN - EVERETT	BRIDGE - 3708
TRACE - CLARK	
CHECK - P.J.	
STATE HIGHWAY COMMISSION BRIDGE DIVISION	
SALMON FALLS BRIDGE	
OVER	
SACO RIVER	
BETWEEN THE TOWNS OF	
HOLLIS & BUXTON	
YORK COUNTY	
STEEL DETAILS	
SHEET 10 OF 10 AUGUSTA, MAINE JUNE 1947	